

**SECTION 00 90 01
BIDDING AND CONTRACT REQUIREMENTS
ADDENDUM NUMBER (1)**

**Demonica Kemper Associates
100 Harrison Street
Peoria, IL 61602
309.282.0170**

To: Prospective Bidders

Issued: April 16th, 2024

Re: ADDENDUM NUMBER (1) TO THE BIDDING DOCUMENTS FOR

**Peoria Park District
Golf Entertainment Facility Renovation an Addition
Architect's Project Number: 22-051**

This addendum forms a part of the bidding and contract documents and modifies the original bidding documents dated April 9, 2024. Acknowledge receipt of this addendum in the space provided on Bid Form. FAILURE TO DO SO MAY SUBJECT BIDDER TO DISQUALIFICATION.

ADDENDA TO THE PROJECT MANUAL

A. N/A

ADDENDA TO THE DRAWINGS

CIVIL

A. The complete civil sheet list has been included in the sheet index. All sheets found within the bidding and permit set are to be included in the contractor bid.

ELECTRICAL – SEE REVISED SHEETS BELOW

1. Drawing E1.23 – SECOND FLOOR PLAN – RANGE BAYS - SYSTEMS
 - a. Revised keyed note #1 for clarification of scope for fiber conduit installation from main building to range bays.
2. Drawing E4.1 – TELECOMM. RISER, SCHEDULE, AND NOTES
 - a. Revised data equipment schedule to clarify scope of work and division of labor for electrical contractor and owners I.T. AND A/V representative.
 - b. Added boxed note for approved equivalents for electrical contractor furnished system components.

CLARIFICATIONS – ALL ANSWERS TO CONTRACTOR QUESTIONS BELOW IN RED

Top Tracer System – are we including that cost in our bid or is that going to be bid direct to the owner? E4.1 notes that it's a turnkey system by Top Tracer, so I wanted to see if we needed to reach out to them and if so, does anyone have a contact? E5.0 also notes it that sounds like it is direct by the owner, but E1.30 Note 1 says to "install".

The Top Tracer system components and programming will be installed/performed by a Top Tracer installer (Top Tracer system to be purchased and installed by the Peoria Park District). Any conduit required for cabling and conductors for the equipment is to be furnished and installed by the E.C. The lighting on top of the building as noted on E1.30 is NOT part of that system and must be furnished and installed by the E.C. and coordinated with the Top Tracer installers.

E4.2 notes the exit/em light allowance that's typical on all KED drawings. The callout types do not match what is on the fixture schedule, though.

This is a typo, they are to provide an allowance for additional emergency fixture type 'EM' at locations identified and required by local inspectors.

E4.0 Fire Alarm System General Notes – Note 3 says cable can be routed open above accessible ceiling but Note 5 says open cable not permitted. I don't know if they mean Note 5 for exposed or unfinished areas, but I wanted to clarify.

Cabling routed above accessible ceilings can be routed open. Cabling routed through areas of exposed or unfinished ceilings shall be in conduit. Open cabling is not permitted in exposed or unfinished spaces.

E4.1 Equipment Schedule Item 3 notes "OSF Standards". I know it will get brought up by the data people since this isn't an OSF job, so I wanted to bring it up now so there's no confusion about special standards they have to meet.

That was a missed copy/paste typo. I can fix in addendum.

E4.1 Sheet Keyed Note 1 says Fiber Termination Shelf is by owner, but the Equipment Schedule reads as its by the data contractor (us or our sub) and that the owner will be terminating and testing the cabling only.

The schedule should read owner FTS to furnish as well. Keyed note is correct. Owner furnishing all rack equipment, terminating at rack, and testing connections/network.

This addendum consists of (2) pages, excluding attachments.

END 009001.

Attachments:

1. G1.00 – SHEET INDEX ABBREVIATIONS, SYMBOLS AND GENERAL NOTES
2. E1.23 – SECOND FLOOR PLAN – RANGE BAYS – SYSTEMS
3. E4.1 – TELECOM, RISER, SCHEDULE AND NOTES



KEITH
Engineering
Design

ADDENDUM # : 01

DATE ISSUED : April 16, 2024

ADDENDUM

Attention : Arron Elmore
Demonica Kemper Architects
100 Harrison St.
Peoria, IL 61602

Subject : Addendum #1
To The Bid Documents For:
PPD - Golf Learning Center
7815 Radnor Rd.
Peoria, IL 61615

Drawings

1. Drawing E1.23 – SECOND FLOOR PLAN – RANGE BAYS - SYSTEMS
 - a. Revised keyed note #1 for clarification of scope for fiber conduit installation from main building to range bays.
2. Drawing E4.1 – TELECOMM. RISER, SCHEDULE, AND NOTES
 - a. Revised data equipment schedule to clarify scope of work and division of labor for electrical contractor and owners I.T. AND A/V representative.
 - b. Added boxed note for approved equivalents for electrical contractor furnished system components.

Attachments

E1.23, E4.1

A handwritten signature in black ink, appearing to read 'Alan Mowry', written over a horizontal line.

Signature

Alan Mowry
Electrical Designer
Printed Name & Title



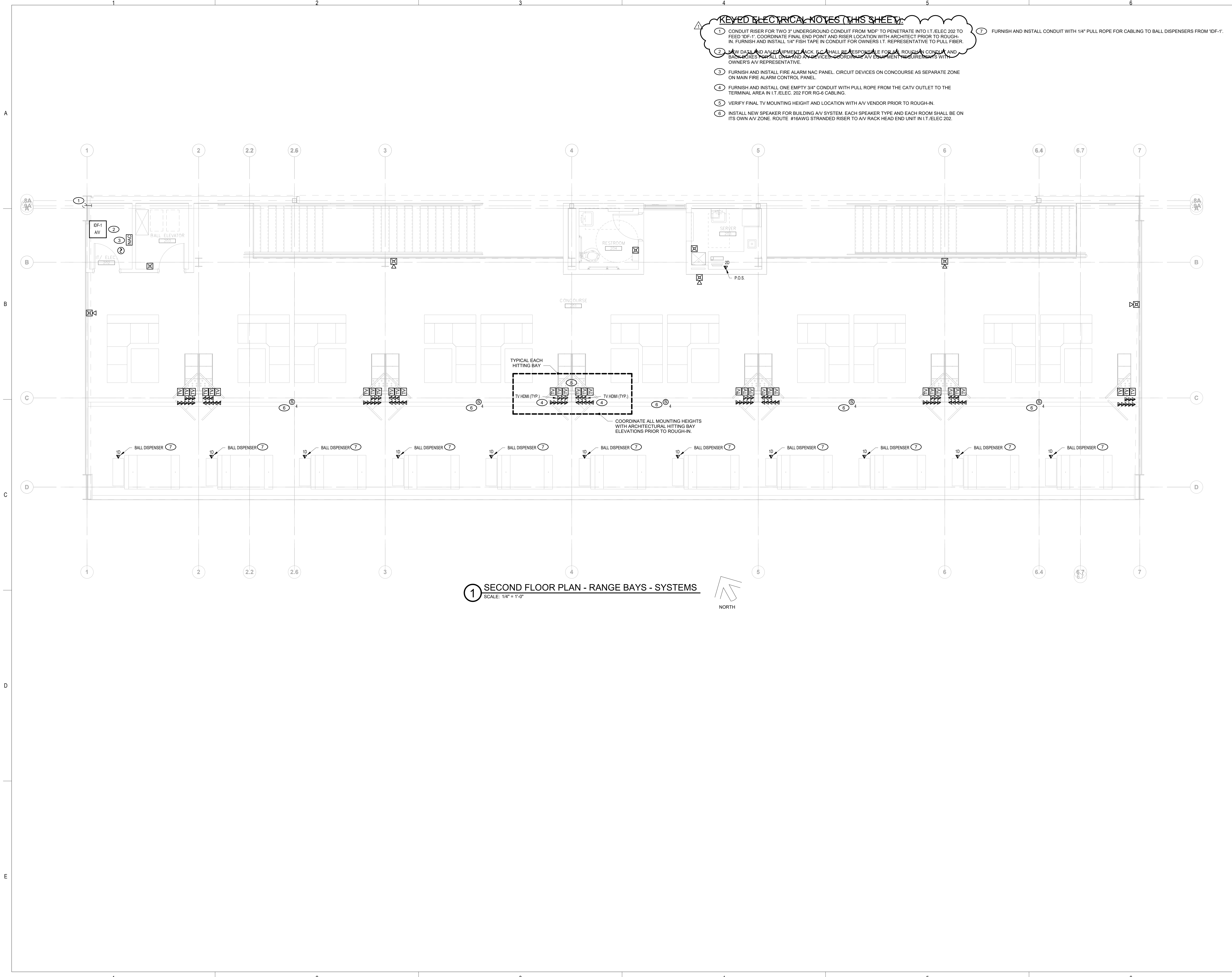
ARCHITECT OF RECORD
DEMONICA KEMPER ARCHITECTS
 100 HARRISON STREET
 PEORIA, IL 61602
 P: 309.282.0100

STRUCTURAL ENGINEER
RLG CONSULTING ENGINEERS
 412 SW WASHINGTON STREET
 PEORIA, IL - 61602
 T: 309.713.2885

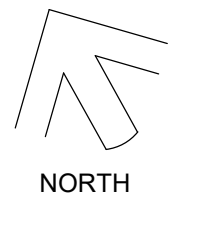
MEP FIRE PROTECTION
KEITH ENGINEERING DESIGN
 707 NE JEFFERSON AVENUE
 PEORIA, IL - 61603
 T: 309.938.4005

CIVIL ENGINEER
AUSTIN ENGINEERING, CO INC.
 311 SW WASHINGTON STREET,
 SUITE 215 PEORIA, IL - 61602
 T: 309.204.0694

- KEYED ELECTRICAL NOTES (THIS SHEET):**
- 1 CONDUIT RISER FOR TWO 3" UNDERGROUND CONDUIT FROM 'MDF' TO PENETRATE INTO I.T./ELEC 202 TO FEED 'IDF-1'. COORDINATE FINAL END POINT AND RISER LOCATION WITH ARCHITECT PRIOR TO ROUGH-IN. FURNISH AND INSTALL 1/4" FISH TAPE IN CONDUIT FOR OWNERS I.T. REPRESENTATIVE TO PULL FIBER.
 - 2 NEW DATA AND AV EQUIPMENT RACK. E.C. SHALL BE RESPONSIBLE FOR ALL ROUGH-IN CONDUIT AND BACKBOXES FOR ALL DATA AND AV DEVICES. COORDINATE AV EQUIPMENT REQUIREMENTS WITH OWNER'S AV REPRESENTATIVE.
 - 3 FURNISH AND INSTALL FIRE ALARM NAC PANEL. CIRCUIT DEVICES ON CONCOURSE AS SEPARATE ZONE ON MAIN FIRE ALARM CONTROL PANEL.
 - 4 FURNISH AND INSTALL ONE EMPTY 3/4" CONDUIT WITH PULL ROPE FROM THE CATV OUTLET TO THE TERMINAL AREA IN I.T./ELEC. 202 FOR RG-6 CABLING.
 - 5 VERIFY FINAL TV MOUNTING HEIGHT AND LOCATION WITH AV VENDOR PRIOR TO ROUGH-IN.
 - 6 INSTALL NEW SPEAKER FOR BUILDING AV SYSTEM. EACH SPEAKER TYPE AND EACH ROOM SHALL BE ON ITS OWN AV ZONE. ROUTE #16AWG STRANDED RISER TO AV RACK HEAD END UNIT IN I.T./ELEC. 202.
 - 7 FURNISH AND INSTALL CONDUIT WITH 1/4" PULL ROPE FOR CABLING TO BALL DISPENSERS FROM 'IDF-1'.



1 SECOND FLOOR PLAN - RANGE BAYS - SYSTEMS
 SCALE: 1/4" = 1'-0"



**PEORIA PARK DISTRICT
 GOLF PRACTICE FACILITY ADDITION**
 7815 N. RADNOR ROAD, PEORIA ILLINOIS 61615
 DKA PROJECT NO: 22-051



DATE: 4/9/2024

KEY PLAN:

SHEET STATUS: APRIL 9, 2024
BIDDING AND PERMIT SET

NO.	DESCRIPTION:	DATE:
1	ADD #1	04/16/24

SHEET TITLE:
**SECOND FLOOR PLAN
 - RANGE BAYS -
 SYSTEMS**

SHEET NUMBER:
E1.23



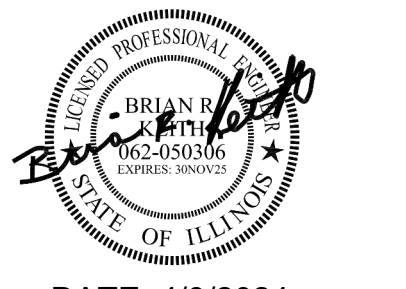
ARCHITECT OF RECORD
DEMONICA KEMPER ARCHITECTS
 100 HARRISON STREET
 PEORIA, IL 61602
 P: 309.282.0100

STRUCTURAL ENGINEER
RLG CONSULTING ENGINEERS
 412 SW WASHINGTON STREET
 PEORIA, IL - 61602
 T: 309.713.2885

MFP FIRE PROTECTION
KEITH ENGINEERING DESIGN
 707 NE JEFFERSON AVENUE
 PEORIA, IL - 61603
 T: 309.538.4005

CIVIL ENGINEER
AUSTIN ENGINEERING, CO INC.
 311 SW WASHINGTON STREET,
 SUITE 215 PEORIA, IL - 61602
 T: 309.204.0694

PEORIA PARK DISTRICT
GOLF PRACTICE FACILITY ADDITION
 7815 N. RADNOR ROAD, PEORIA ILLINOIS 61615
 DKA PROJECT NO: 22-051



DATE: 4/9/2024

KEY PLAN:

SHEET STATUS: APRIL 9, 2024
BIDDING AND PERMIT SET

NO.	DESCRIPTION:	DATE:
1	ADD #1	04/16/24

SHEET TITLE:
TELECOMM. RISER, SCHEDULE, AND NOTES

SHEET NUMBER:

E4.1

4/16/2024 8:16:16 AM

TELEPHONE AND DATA EQUIPMENT SCHEDULE

ITEM	SYMBOL	DESCRIPTION	MANUFACTURER
1	MDF	MAIN TELECOMMUNICATIONS RACK, FOUR-POST, SHALL HAVE MINIMUM 45RU. FURNISHED BY OWNER, INSTALLED BY OWNERS I.T. REPRESENTATIVE. E.C. SHALL BE RESPONSIBLE FOR ALL ROUGH-IN OF CONDUIT AND BACK BOXES BETWEEN DATA RACKS AND EQUIPMENT. COORDINATE ALL WORK WITH THE OWNER'S IT REPRESENTATIVE PRIOR TO INSTALLATION.	FURNISHING AND INSTALLATION OF EQUIPMENT AND TERMINATIONS SHALL BE DONE BY THE OWNERS I.T. REPRESENTATIVE. E.C. SHALL BE RESPONSIBLE FOR ALL ROUGH-IN CONDUIT, BACK BOXES, AND CABLING.
2	IDF-1, A/V	WALL MOUNTED DATA RACK, SHALL HAVE A MINIMUM OF 24 RU FOR EQUIPMENT. FURNISHED BY OWNER, INSTALLED BY OWNERS I.T. REPRESENTATIVE. E.C. SHALL BE RESPONSIBLE FOR ALL ROUGH-IN OF CONDUIT AND BACK BOXES BETWEEN DATA RACKS AND EQUIPMENT. E.C. SHALL BE RESPONSIBLE FOR PULLING ALL A/V ASSOCIATED CABLING TO EQUIPMENT RACKS FOR TERMINATION BY OWNERS I.T./A.V. REPRESENTATIVE. COORDINATE ALL WORK WITH THE OWNER'S IT REPRESENTATIVE PRIOR TO INSTALLATION.	FURNISHING AND INSTALLATION OF EQUIPMENT, CABLING, AND TERMINATIONS SHALL BE DONE BY THE OWNERS I.T. REPRESENTATIVE. E.C. SHALL BE RESPONSIBLE FOR ALL ROUGH-IN CONDUIT AND BACK BOXES AND A/V CABLING
3	NEW TELE-DATA OUTLET	NEW TELECOMMUNICATION VOICE/ DATA OUTLET. ROUGH-IN AND CABLED BY THE ELECTRICAL CONTRACTOR, TERMINATED BY A CERTIFIED IT INSTALLER. THE INSTALLER'S PROPOSAL SHALL BE INCLUDED AS PART OF THE ELECTRICAL CONTRACTOR'S BID PROPOSAL. COVERPLATE SHALL CONSIST OF A MODULAR FOUR PORT CONFIGURATION. ALL UNUSED PORTS SHALL HAVE REMOVABLE BLANKS INSERTED FOR FUTURE USE. "ID" SUBSCRIPT NEXT TO SYMBOL INDICATES THE QUANTITY OF DATA OUTLETS TO BE PROVIDED IN THE OPENING. EACH JACK SHALL BE A RJ-45 CATEGORY 6 OUTLET. ALL DATA CABLING SHALL BE BLUE CATEGORY 6 PLENUM RATED FOUR PAIR UTP. ALL CABLES SHALL BE TERMINATED TO A NEW PATCH PANEL IN THE UPPER RIGHT RACK IN MDF-1. CABLING MAY BE ROUTED OPEN ABOVE ACCESSIBLE CEILINGS. ALL OPEN CABLING SHALL BE PER OSF STANDARDS. ALL EXPOSED CABLING SHALL BE ROUTED IN CONDUIT IN UNFINISHED AREAS. SURFACE MOUNTED INSTALLATIONS IN FINISHED SPACES ARE NOT PERMITTED. "W" SUBSCRIPT INDICATES A WALL PHONE OUTLET. VERIFY THE EXACT MOUNTING HEIGHT PRIOR TO ROUGH-IN.	SYSTIMAX ELECTRICAL CONTRACTOR TO PROVIDE ALL ROUGH-IN AND CABLING LABOR AND MATERIALS. OWNERS A/V REPRESENTATIVE SHALL PROVIDE ALL DATA MEDIA SYSTEM COMPONENT MATERIALS AND LABOR AND SHALL BE INCLUDED IN THE ELECTRICAL BID PROPOSAL. COVER PLATE SYSTIMAX BLANKS SYSTIMAX CONNECTORS SYSTIMAX CABLE SYSTIMAX J-HOOKS PANDUIT JP2W-L20 PANDUIT JP4W-X20 HOOK AND LOOP TAPE PANDUIT TTS-20R0
4	AP _{ID}	TELECOMMUNICATIONS WIRELESS ACCESS POINT FURNISHED AND INSTALLED BY OWNERS I.T. REPRESENTATIVE. E.C. SHALL BE RESPONSIBLE FOR ALL ROUGH-IN OF CONDUIT AND BACK BOXES.	INSTALLED, TERMINATED AND TESTED BY THE OWNERS I.T. REPRESENTATIVE.
5	FTS	FIBER TERMINATION SHELF, RACK MOUNTED FIBER DISTRIBUTION ENCLOSURE, FIBER ADAPTER PANELS, AND TYPE LC FIBER CONNECTORS. OWNERS I.T. REPRESENTATIVE SHALL TERMINATE AND TEST ALL FIBER OPTIC CABLING AS INDICATED ON THE DRAWINGS AND SPECIFICATIONS.	SYSTIMAX FIBER TRAY FIBER ADAPTER MODULES FIBER CONNECTORS
6	DMPP	MODULAR PATCH PANEL FURNISHED AS PART OF MDF. SEE PLANS AND SPECIFICATIONS FOR DESCRIPTION. PROVIDE QUANTITY AS REQUIRED BY THE NUMBER OF CABLES AND SPARE CAPACITY REQUIRED BY THE DRAWINGS AND SPECIFICATIONS.	SYSTIMAX FLAT PLATE PATCH PANEL
7	TGB-1	MAIN TELECOMMUNICATIONS GROUND BAR, HIGH CONDUCTIVITY COPPER AND TIN-PLATED TO INHIBIT CORROSION. 1/4" X 2" X 1/2" PRE-ASSEMBLED WITH BRACKETS AND INSULATORS ATTACHED. SEE DRAWINGS FOR QUANTITIES, LOCATIONS AND ADDITIONAL WORK REQUIRED.	PANDUIT GB2B0306TP-1
8	TTB-1	TELEPHONE TERMINAL BOARD FURNISH AND INSTALL ONE 4' X 8' X 3/4" FIRE RATED PLYWOOD. PROVIDE TWO COATS OF FIRE RESISTANT WHITE PAINT. MOUNT VERTICALLY TO WALL SUCH THAT THE MIDDLE OF THE PLYWOOD IS 48" ABOVE FINISHED FLOOR.	
9	CS ₁	COAXIAL CEILING SPEAKER, 8" DIAMETER, 60W, 70.7V/100V TRANSFORMER, 90dB SENSITIVITY, FRONT MOUNTED TAP SELECTOR. E.C. SHALL BE RESPONSIBLE FOR ALL ROUGH-IN OF CONDUIT AND BACK BOXES. VERIFY MOUNTING HEIGHTS WITH ARCHITECTURAL ELEVATIONS PRIOR TO ROUGH-IN.	ATLAS IED FAP82T FURNISHED BY OWNERS A/V REPRESENTATIVE
10	CS ₂	COAXIAL CEILING SPEAKER, 8" DIAMETER, 16W, 70.7V/100V TRANSFORMER, 90dB SENSITIVITY, FRONT MOUNTED TAP SELECTOR. E.C. SHALL BE RESPONSIBLE FOR ALL ROUGH-IN OF CONDUIT AND BACK BOXES. VERIFY MOUNTING HEIGHTS WITH ARCHITECTURAL ELEVATIONS PRIOR TO ROUGH-IN.	ATLAS IED FAP42T FURNISHED BY OWNERS A/V REPRESENTATIVE
11	CS ₃	DROP-IN 2'X2' CEILING SPEAKER, SUITABLE FOR USE IN GRID CEILINGS, ALUMINUM WOOFFERS, 360 DEGREES HEMISPHERICAL SOUND, FIRE RETARDANT ABS MATERIAL, CAN BE PAINTED TO MATCH CEILING, 160W, 92dB SENSITIVITY, 70V TRANSFORMER. E.C. SHALL BE RESPONSIBLE FOR ALL ROUGH-IN OF CONDUIT AND BACK BOXES.	PURE RESONANCE SD4 FURNISHED BY OWNERS A/V REPRESENTATIVE
12	CS ₄	8" 2-WAY ALL-WEATHER SPEAKER, INJECTION MOLDED, UV RESISTANT, POWDER COATED ALUMINUM GRILLS, BLACK HOUSING, 80W, 70V/100V TRANSFORMER, 92dB SENSITIVITY. E.C. SHALL BE RESPONSIBLE FOR ALL ROUGH-IN OF CONDUIT AND BACK BOXES.	ATLAS IED SM82T-B FURNISHED BY OWNERS A/V REPRESENTATIVE
13	Q	OWNER PROVIDED CAMERA, G5 BULLET. E.C. SHALL BE RESPONSIBLE FOR ALL ROUGH-IN OF CONDUIT AND BACK BOXES COORDINATE FINAL LOCATIONS WITH OWNERS A/V REPRESENTATIVE PRIOR TO ROUGH-IN. INSTALLED AND CABLED BY OWNERS A/V REPRESENTATIVE.	OWNER SUPPLIED AND INSTALLED G5 BULLET
14	Q	OWNER PROVIDED CAMERA, G4 PTZ. E.C. SHALL BE RESPONSIBLE FOR ALL ROUGH-IN OF CONDUIT AND BACK BOXES INSTALLED AND CABLED BY OWNERS A/V REPRESENTATIVE.	OWNER SUPPLIED AND INSTALLED G4 PTZ
15	TOP TRACER	TOP TRACER RACK MOUNTED SERVER FOR RANGE SYSTEM, 2RU. FURNISHED, INSTALLED, AND CABLED BY TOP TRACER SYSTEM INSTALLER.	TOP TRACER RACK EQUIPMENT FURNISHED AND INSTALLED BY TOP TRACER SYSTEM INSTALLER.

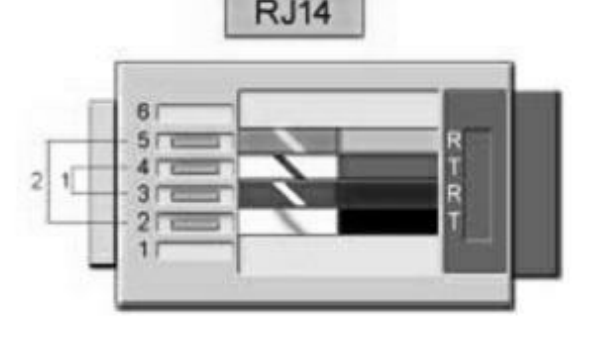
Straight-Through Ethernet Cable Pin Out for T568B

RJ45 Pin #	Wire Color (T568B)	Wire Diagram (T568B)
1	White/Orange	
2	Orange	
3	White/Green	
4	Blue	
5	White/Blue	
6	Green	
7	White/Brown	
8	Brown	

Telephone Married Colors

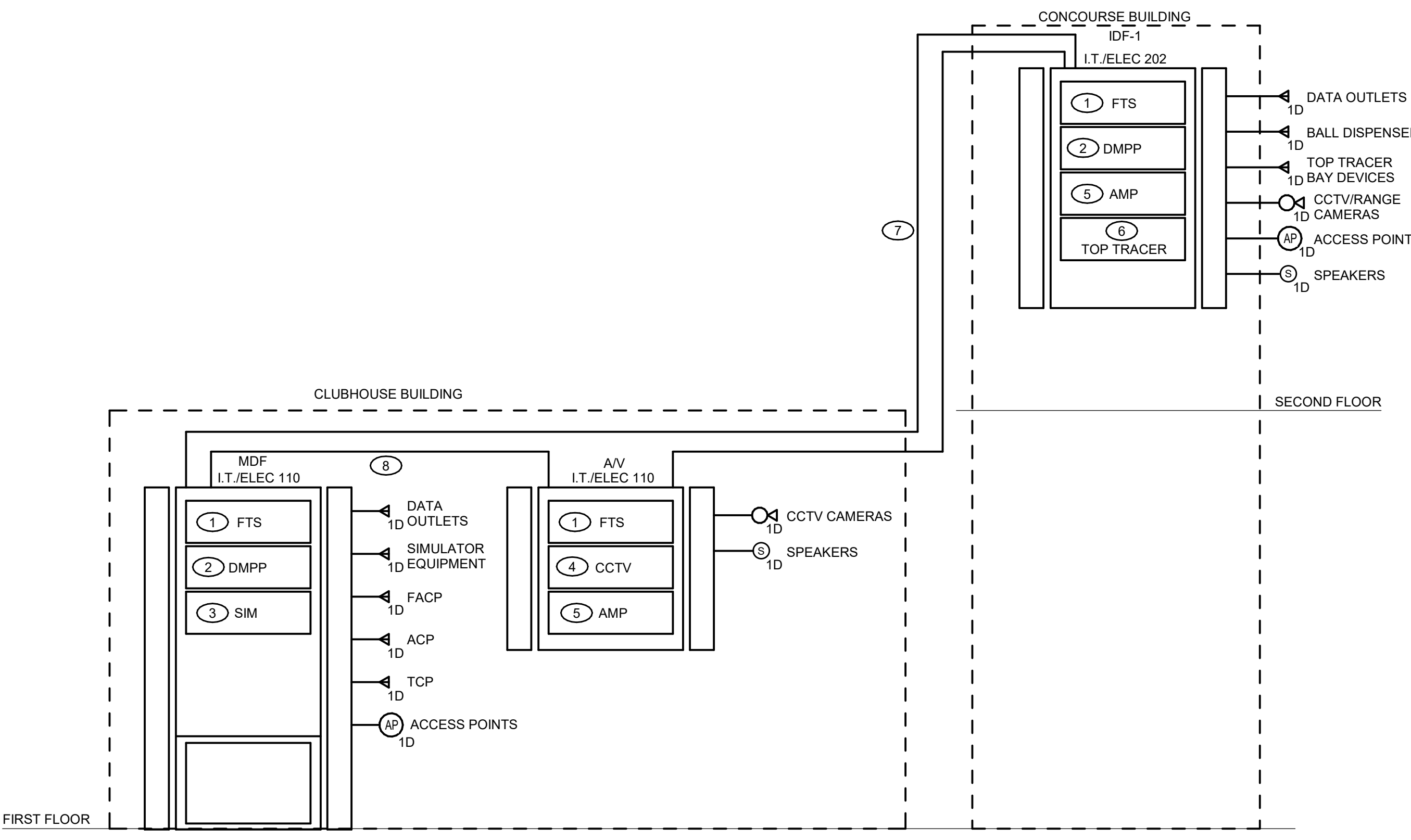
High-strand colors	Four-strand equivalent
T1 = WHITE with blue mark	Black
R1 = BLUE with white mark	Red
T2 = WHITE with orange mark	Black
R2 = ORANGE with white mark	Yellow
T3 = WHITE with green mark	Black
R3 = GREEN with white mark	Black
T4 = WHITE with brown mark	Black
R4 = BROWN with white mark	Black

Telephone Jack RJ14 wire map



RJ 45 CONNECTOR DETAIL
 SCALE: NOT TO SCALE

NOTE:
 SYSTIMAX USED FOR BASIS OF DESIGN OF NETWORK AND I.T. COMPONENTS AND CABLING. ALTERNATE MANUFACTURERS MAY BE USED THAT CAN MEET OR EXCEED DESIGN STANDARDS OF THE SYSTIMAX SYSTEM. ACCEPTABLE ALTERNATES INCLUDE BUT NOT LIMITED TO:
 -COMMSCOPE
 -PANDUIT



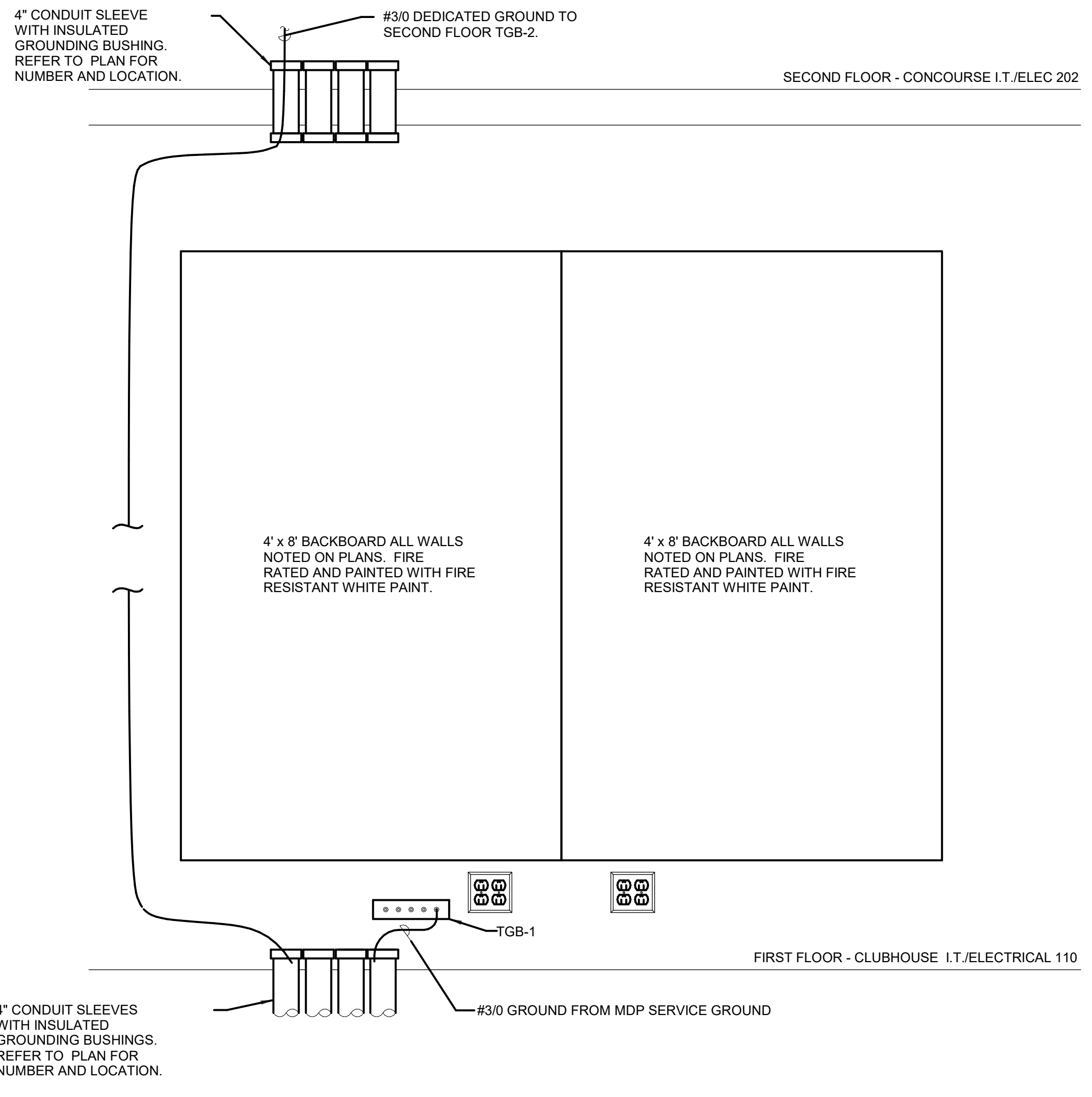
NOTES:

FURNISH AND INSTALL TWO UNDERGROUND 3" PVC CONDUIT FROM MDF IN I.T./ELECTRICAL 110 TO IDF-1 IN HITTING BAY/CONCOURSE I.T./ELEC 202. INCLUDE ALL CUTTING, CORING, PATCHING AND FIRE SEALING IN BID PROPOSAL. COORDINATE EXACT LOCATIONS WITH THE PROJECT MANAGER AND THE OWNER'S IT REPRESENTATIVE PRIOR TO INSTALLATION.

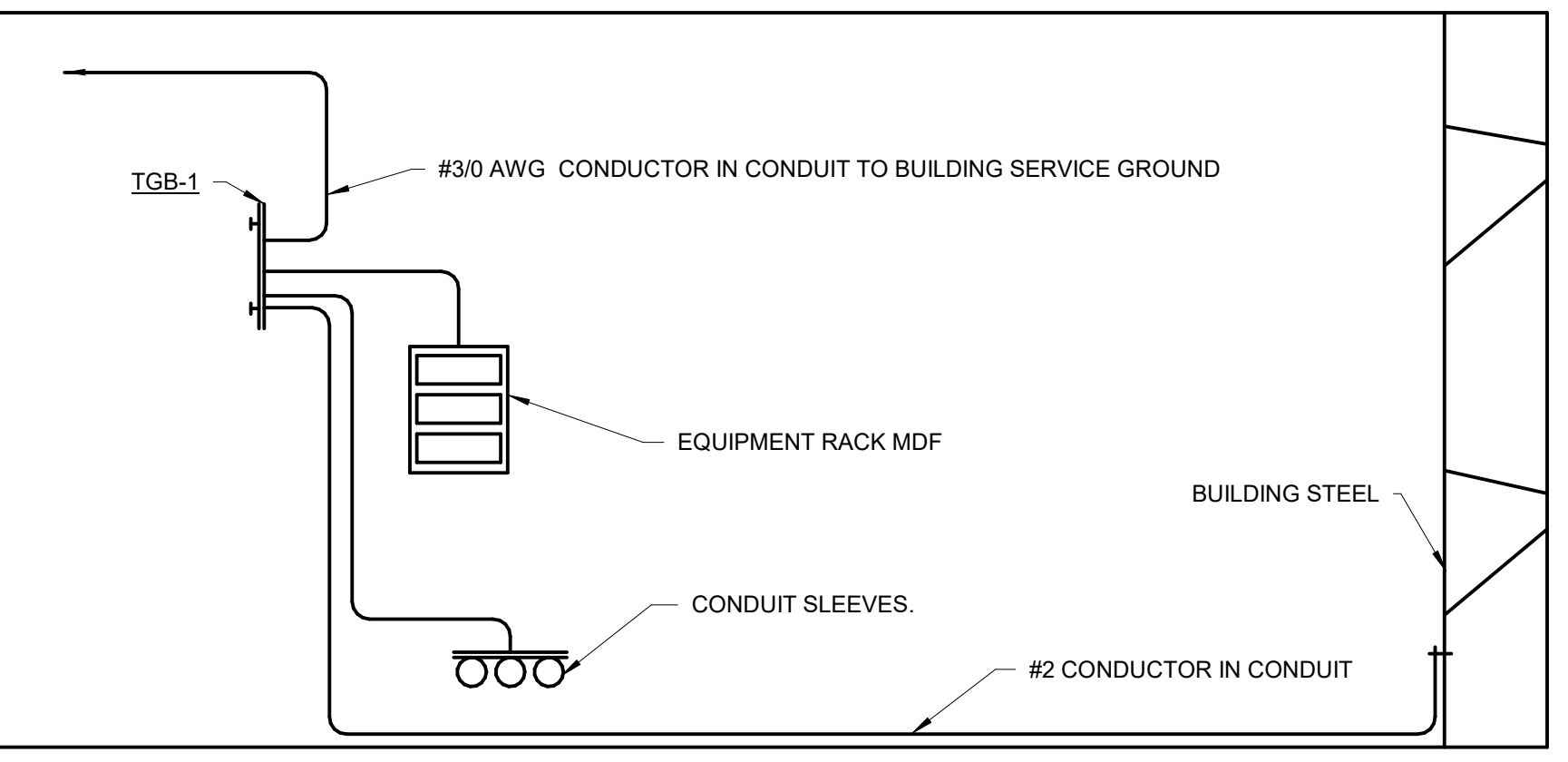
1 TELECOMMUNICATION CONDUIT RISER DIAGRAM
 SCALE: NOT TO SCALE

KEYED ELECTRICAL NOTES (THIS SHEET):

- FIBER TERMINATION SHELF, FURNISHED, INSTALLED, AND CABLED BY OWNERS I.T. REPRESENTATIVE.
- MODULAR PATCH PANEL, OWNERS I.T. SHALL VERIFY QUANTITIES FOR EACH EQUIPMENT RACK AND SHALL FURNISH AND INSTALL ALL PANELS AND ASSOCIATED CABLING AND TERMINATIONS.
- GOLF SIMULATOR EQUIPMENT, FURNISHED AND INSTALL BY GOLF SIMULATOR SUPPLIER/INSTALLER. OWNERS I.T. SHALL VERIFY REQUIRED RACK UNIT SPACE FOR EQUIPMENT RACK SIZING.
- CCTV CAMERA SYSTEM SERVER AND ASSOCIATED RACK MOUNTED EQUIPMENT, FURNISHED AND INSTALLED BY CCTV SYSTEM INSTALLER. VERIFY REQUIRED RACK UNIT SPACE FOR EQUIPMENT RACK SIZING.
- AUDIO SYSTEM AMPLIFIER AND HEAD UNIT, FURNISHED AND INSTALLED BY OWNERS A/V REPRESENTATIVE. VERIFY REQUIRED RACK UNIT SPACE FOR EQUIPMENT RACK SIZING.
- TOP TRACER RANGE SYSTEM SERVER AND ASSOCIATED RACK MOUNTED EQUIPMENT, FURNISHED AND INSTALLED BY TOP TRACER SYSTEM INSTALLER. OWNERS I.T. SHALL VERIFY REQUIRED RACK UNIT SPACE FOR EQUIPMENT RACK SIZING.
- E.C. SHALL PROVIDE THREE 3" UNDERGROUND PVC CONDUIT FROM MDF-1 TO IDF-1 FOR TELECOMMUNICATIONS CABLING.
- FIBER CABLING BETWEEN ALL DATA RACKS SHALL BE FURNISHED, INSTALLED, AND TERMINATED BY OWNERS I.T. REPRESENTATIVE.



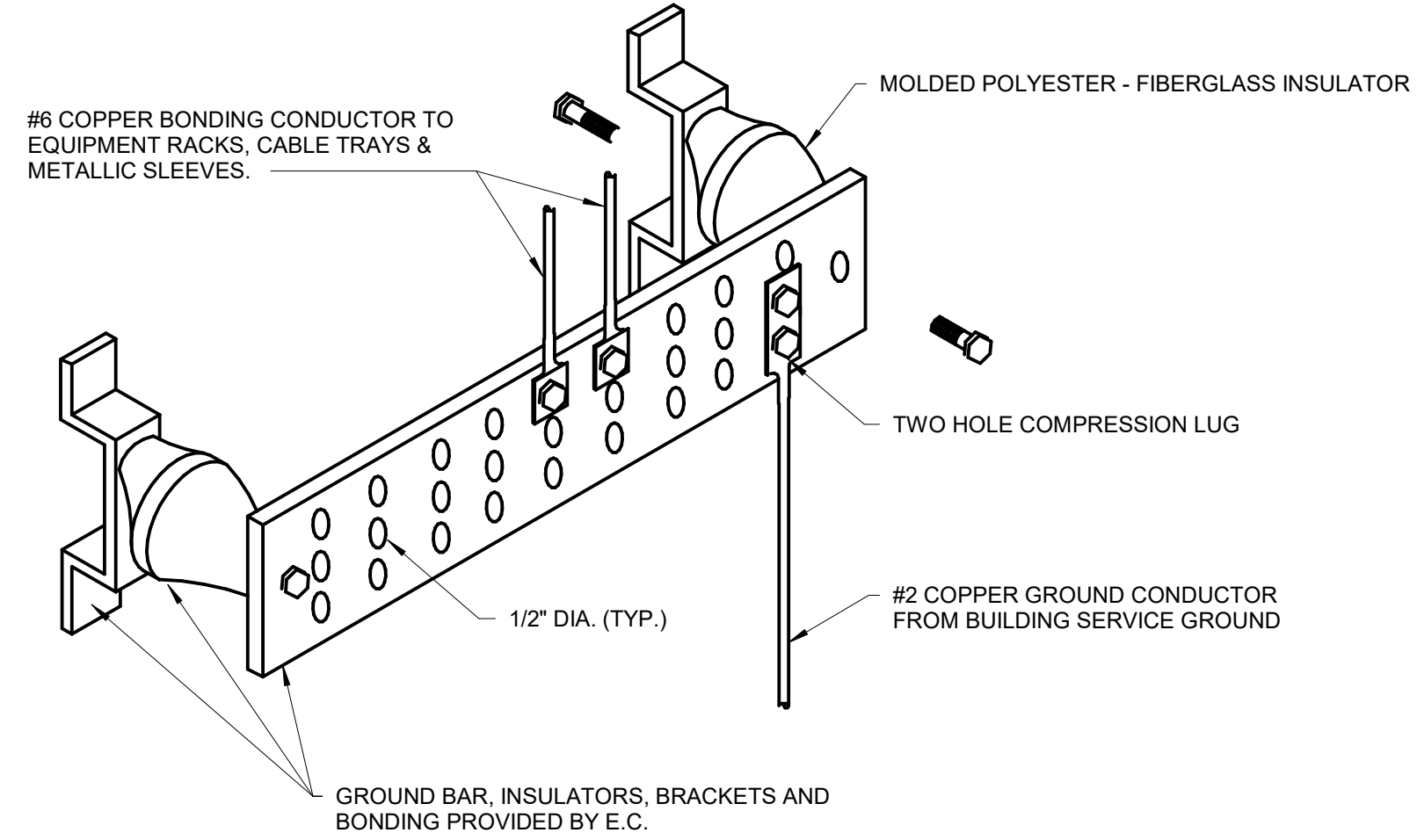
3 TELECOM TYPICAL TTB ELEVATION
 SCALE: NOT TO SCALE



NOTES:

- ALL CONDUCTORS IN THIS GROUNDING RISER SHALL BE #6 AWG COPPER CONDUCTORS (GREEN) UNLESS DISTANCE IS GREATER THAN 12 FEET.
- GROUNDING DETAIL IS DIAGRAMMATIC, REFER TO ENLARGED PLANS FOR QUANTITIES AND LOCATION OF EQUIPMENT.

4 TELECOMMUNICATIONS ROOM GROUNDING DETAIL
 SCALE: NOT TO SCALE



NOTES:

- MOUNT BAR AT +24" A.F.F.

5 TGB-1 GROUND BAR DETAIL
 SCALE: NOT TO SCALE